

Apache[®]
UV FLATBED PRINTER



SSE Worldwide takes your print business into new markets you never thought possible.

**Our full line-up of Apache[®] flatbed printers
using the latest inkjet and curing technology.**

Our experts provide full training, guidance and support. Amazing versatility, with incredible spot varnish, fluorescent inks, and embossing effects.

Intelligent RIP software, handling complex effects or simple job manipulation. Real time printing info, such as ink usage, print speed and timing.

Suitable for a wide range of applications, printing onto a vast array of materials and surfaces.

SSE Worldwide – Your international print equipment partner

SSE
WORLDWIDE



CUSTOMISED INDUSTRIAL PRINTER DEVELOPING

- Various types of print heads available
- Optimised system according to customer applications
- Supporting different types of jigs for mass production

GIFT PRINTING

- Special & textured effects
- Embossed
- Braille print

ADDITIVE MANUFACTURING

- Small prototype components
- Badges
- Concepts & Mock-ups

SAMPLE MARKETS

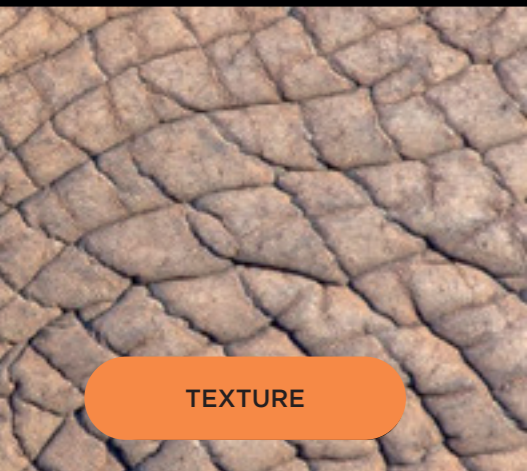
- Mobile accessories
- Signage
- Bespoke packaging
- Wearable technology
- Stationery
- Bags
- Clothing & leathers
- Engineering applications

HARDWARE & CONSUMABLES

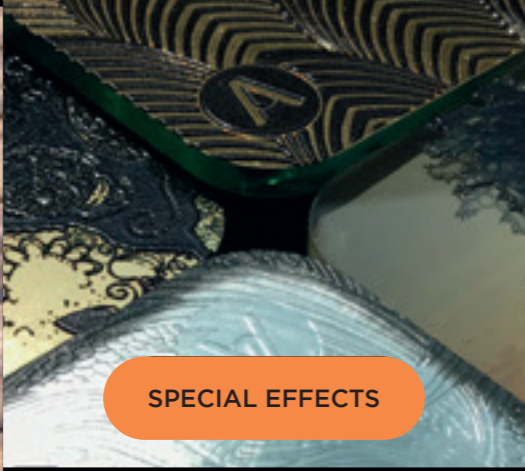
- Specialist inks & flush
- Print heads & Dampers
- Capping & maintenance stations
- Pipes & control boards

PRINTABLE SUBSTRATES

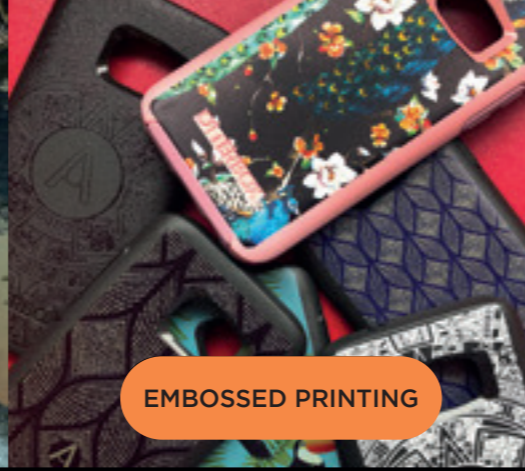
Wood, Slate, Glass, Acrylics, Metals, Plastics & more



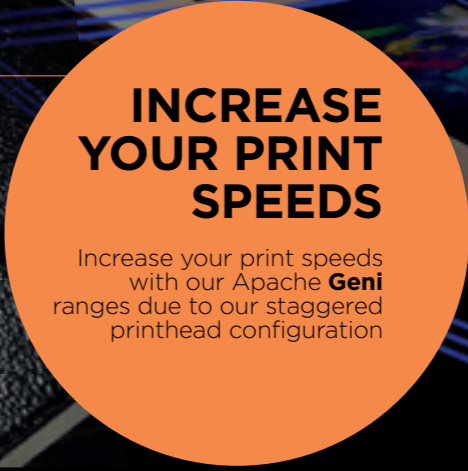
TEXTURE



SPECIAL EFFECTS



EMBOSSSED PRINTING



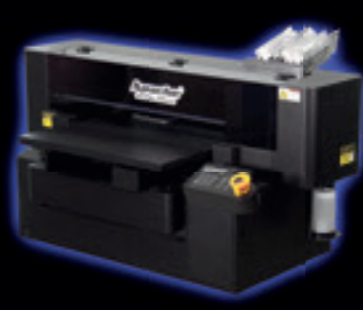
INCREASE YOUR PRINT SPEEDS

Increase your print speeds with our Apache **Geni** ranges due to our staggered printhead configuration

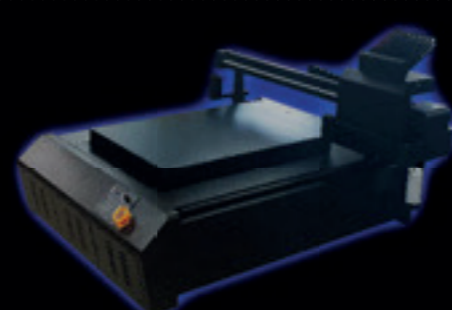
FULL APACHE® RANGE



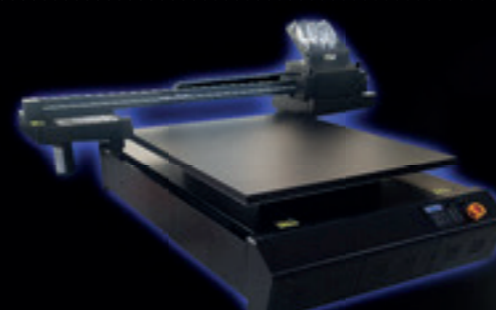
Apache® GH4545Evo



Apache® Gen6045i



Apache® Gen6090i



Apache® Gen1012i



Apache® Geni Flux

SSE Worldwide
PO Box 229 Ilkley
LS29 1AA

t: +44 (0)1943 605650

020 3983 4949

e: info@sseworldwide.co.uk

w: sseworldwide.co.uk

Specifications	GH4545Evo	TH6045Geni	TH6090Geni	TH1012Geni	Geni Flux
Print Head Technology Ink Configurations	3 x Ricoh GH2220 2 Channel Print head (CMYK + WW)	2 x Ricoh TH5241 4 Channel Print head (CMYK + CMYK CMYK + WW + VV CMYK + WWWW)	2 x Ricoh TH5241 4 Channel Print head (CMYK + CMYK CMYK + WW + VV CMYK + WWWW stagger head configuration)	2 x Ricoh TH5241 4 Channel Print head (CMYK + CMYK CMYK + WW + VV CMYK + WWWW stagger head configuration)	2 x Ricoh TH5241 4 Channel Print head (CMYK + CMYK CMYK + WW + VV CMYK + WWWW)
Resolution/Speed for Max. Print Area	@720 x 1200dpi = 8 Pass Colour + White = 14 min 52 sec ^ˆ 4 Pass Colour = 3 min 18 sec ^ˆ	@720 x 1200dpi = 8 Pass Colour + White = 17 min 56 sec ^ˆ 4 Pass Colour = 4 min 15 sec ^ˆ	@720 x 1200dpi = 8 Pass Colour + White = 14 min 14 sec ^ˆ 4 Pass Colour = 6 min 45 sec ^ˆ	@720 x 1200dpi = 8 Pass Colour + White = 21 min 10 sec ^{ˆ**} 4 Pass Colour = 8 min 10 sec ^ˆ	@720 x 1200dpi = 8 Pass Colour example Golfball 900pcs/h
Max. Print Area mm	450 x 450	600 x 450	600 x 900	1000 x 1200	600 x Unlimited
Max. Substrate Size (mm)	450 x 450+*	620 x 450+*	620 x 900+*	1020 x 1250	-
Max. Substrate Weight (kg)	10kg	15kg	20kg	20kg	20kg
Max. Substrate (mm)	120mm	150mm	150mm	150mm	150mm
Substrate/ Material Type	Plastics, PC, PET, Acrylic, Glass, Metals, Wood, Stone, Foamex +	Plastics, PC, PET, Acrylic, Glass, Metals, Wood, Stone, Foamex +	Plastics, PC, PET, Acrylic, Glass, Metals, Wood, Stone, Foamex +	Plastics, PC, PET, Acrylic, Glass, Metals, Wood, Stone, Foamex +	Plastics, PC, PET, Acrylic, Glass, Metals, Wood, Stone, Foamex +
Interface	USB 2.0	USB 2.0	USB 2.0	USB 2.0	USB 2.0
Operating System Requirements	Windows 10, 8.1, 7, XP (64 bit recommended)	Windows 10, 8.1, 7, XP (64 bit recommended)	Windows 10, 8.1, 7, XP (64 bit recommended)	Windows 10, 8.1, 7, XP (64 bit recommended)	Windows 10, 8.1, 7, XP (64 bit recommended)
Power Source	AC 110-240V, 3A, Single Phase	AC 110-240V, 3A, Single Phase	AC 110-240V, 5A, Single Phase	AC 110-240V, 5A, Single Phase	AC 110-240V, 5A, Single Phase
Dimensions/Weight	1110 x 730 x 650mm (W x L x H)/60kg	1260 x 730 x 1300mm (W x L x H)/90kg	1600 x 1410 x 1350mm (W x L x H)/160kg	1600 x 1410 x 1350mm (W x L x H)/160kg	1300 x 640 x 1300mm (W x L x H)/110kg
Bed Type	Teflon coated vacuum table	Teflon coated vacuum table	Teflon coated vacuum table (2-zones)	Teflon coated vacuum table (2-zones)	Indexed steel conveyor swappable print fixtures
Curing	1x Air Cooled UV LED (40mm length)	2x Air Cooled UV LED: 2x full UV LED (40mm length) or 1x full and 1x small UV LED for spot gloss effect (30mm length)	2 x Air Cooled LED 2x Air Cooled UV LED: 2x full UV LED (70mm length)	2 x Air Cooled LED 2x Air Cooled UV LED: 2x full UV LED (70mm length)	2 x Air Cooled LED 2x Air Cooled UV LED: 2x full UV LED (40mm length)
Optional Fixtures	Rotary	Rotary 120mm Diameter max.	-	-	-
Inks	200ml Foil Pouch (CMYK + WV)	200ml Foil Pouch (CMYK + WV)	200ml Foil Pouch (CMYK + WV)	200ml Foil Pouch (CMYK + WV)	200ml Foil Pouch (CMYK + WV)

*Open architecture to allow oversized substrates ^Speed dependent on computer performance & graphic complexity.

**Speeds should be quicker due to staggered head configuration.

We reserve the right to make changes to technical specifications without prior notice.